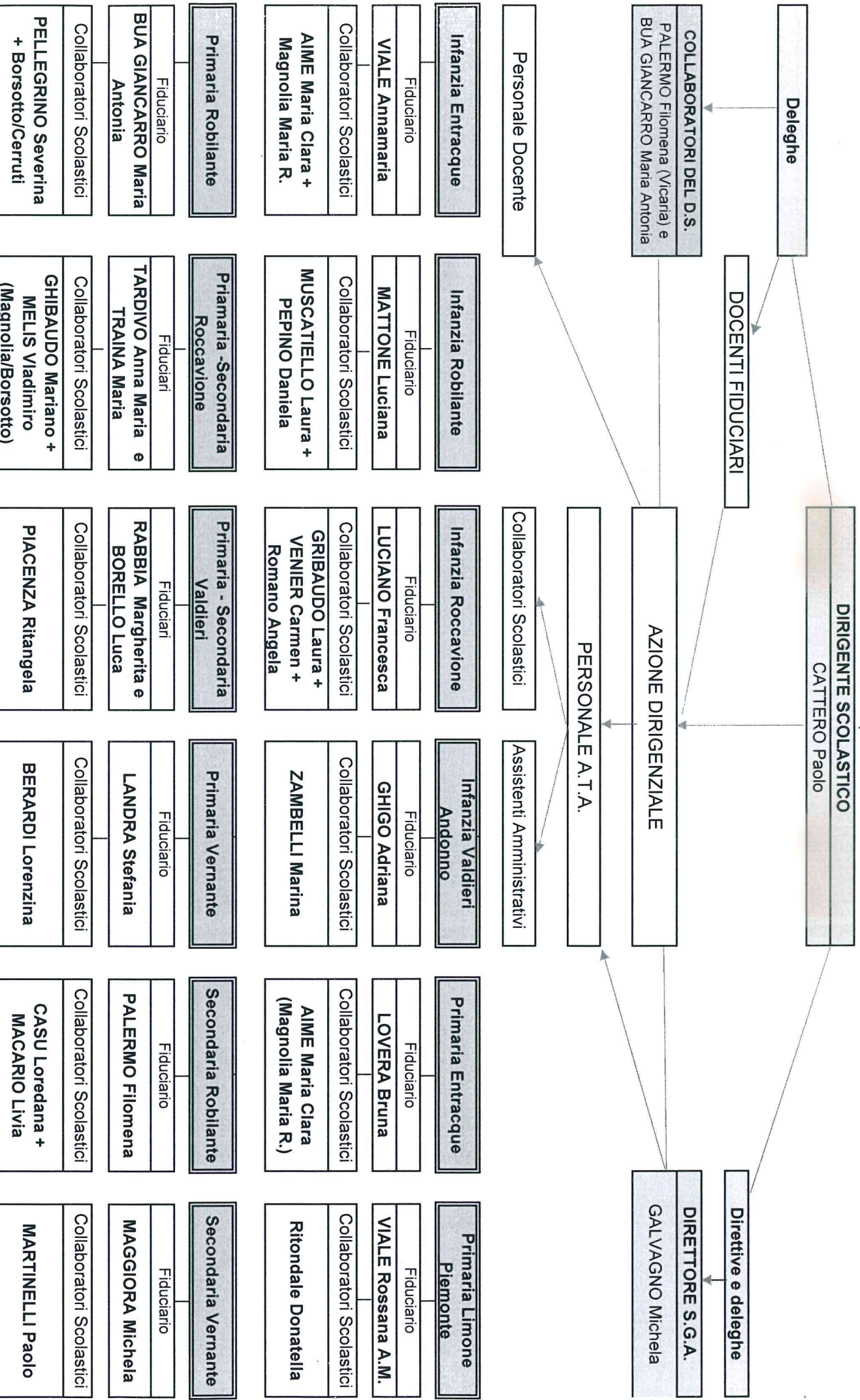


# ORGANIGRAMMA ISTITUTO COMPRENSIVO ROBILANTE A.S. 2016/17



Assistenti Amministrativi: BERNADI Eliana (30h) + MURISASSO Raffaella (36 h) + OLIVERO Maria (30 h) + TARDITI Debora (30 h) + Gondolo Nadia (30 h)

DSGA  
14  
G